

Cosyfeet®

AUTUMN/WINTER 2022



STOCKISTS' COLLECTION

extra roomy FOOTWEAR, SOCKS & HOSIERY

Welcome to Cosyfeet

Stockists' collection



NEW
SEASON

STYLES &
COLOURS

SEASONAL COLOUR & COMFORT

Our autumn/winter collection is bursting with new colours and styles. Whether you're heading out and about or looking to stay warm and comfortable at home we've got it covered. Look out for new styles Mimi (pg10-11), Hayley (pg30) & Ned (pg67).



Joanna Trevena
Head of Product & Merchandising

P.S. Don't forget about our great range of premium-quality socks and hosiery for the complete comfort package!

ABOUT COSYFEET STOCKISTS

Cosyfeet stockists are independent businesses who buy and re-sell our products. We leave it to them to decide what to stock although most will be happy to order in any item you see in this catalogue. If you purchase from a stockist your contract will be with the retailer and subject to their terms of business, including their returns policy. **The Cosyfeet NO QUIBBLE MONEY BACK GUARANTEE does not apply to purchases made through stockists.**

Some stockists may be able to offer VAT Relief on footwear if you have a qualifying medical condition. Please contact them for further information. Any queries regarding your rights under the General Data Protection Regulations should be directed to the stockist.

Because we are continually improving and developing our range there may be some slight variations to the specifications and colours shown in this catalogue. Cosyfeet reserve the right to withdraw or alter the specification or price of a product without prior notification.

Cosyfeet[®] extra roomy

*"I can't believe I finally
have shoes wide enough
for my swollen feet."*

FEFO REVIEW



WOMEN'S FOOTWEAR
6E
extra roomy
FITTING

MEN'S FOOTWEAR
3H
extra roomy
FITTING

What makes our footwear so special?

There's wide fitting and then there's Cosyfeet!

Specially designed to fit and flatter swollen feet, our footwear is much wider, deeper and roomier than the wide-fitting footwear you'll find on the high street. We are a small, caring company with 39 years' experience of fitting swollen feet and legs.

- Exceptionally wide, deep & roomy – but look like 'normal' shoes
- Very adjustable – fit a range of swelling
- Easy to get on & off swollen feet
- Can also fit bunions, problem toes, orthotics & bandaging

FIND
OUT
MORE >

WHERE QUALITY & STYLE MEETS BLISSFUL COMFORT

We believe that swollen feet should have the most comfortable, stylish footwear possible. That's why we combine the latest trends with premium materials, expert shoemaking and advanced foot comfort technology. Thanks to innovations such as our 'hidden depth' design, our footwear fits swollen feet with ease but still looks stylish and streamlined.

ENDORSED BY UK EXPERTS

Cosyfeet comes highly recommended by a number of healthcare professionals including podiatrists, foot health practitioners and occupational therapists from across the UK. We are also recognised by the Healthy Footwear Guide, a collaboration between UK footwear brands and foot health professionals.



IS COSYFEET RIGHT FOR YOU?

Cosyfeet is specially designed to fit swollen feet. Some styles can also fit bunions, problem toes and bandaging. All our footwear has the same extra roomy width fitting (6E for women and 3H for men). Don't worry if you don't know your width fitting, most of our styles are adjustable and can cope with a range of foot shapes and swelling. To put it simply, if you have swollen feet and you can't find footwear to fit, we can probably help.

Look out for our product features...



HIDDEN
DEPTH



DIABETIC
FRIENDLY



STRAP EXTENSIONS
AVAILABLE



MADE IN
BRITAIN

DO I NEED TO TAKE CARE IF I HAVE DIABETES?



Yes. We are aware of the problems that people with diabetes may have and so we offer footwear and socks with minimal seaming. However, not all our products may be suitable for your feet, so you need to make your own judgement or ask a medical advisor. Please run your fingers inside any item before wearing, checking for anything that may harm. After buying new footwear, wear it for 30 minutes to 1 hour at first, then inspect your feet for pressure marks or irritation. A hand mirror is useful so you can examine your whole foot. Gradually build up the wearing time. For more information visit diabetes.org.uk

WHAT SIZE DO I NEED?

Most customers find that the shoe size they wore before experiencing swelling (e.g size 6) is wide and deep enough to provide the extra room they need. If we don't offer a half size in the style you want we recommend you try the smaller full size.

STRAP EXTENSIONS



STRAP
EXTENSIONS
AVAILABLE

If your feet are especially swollen, we can supply matching strap extensions to lengthen the straps on most touch-fastening styles. All strap extensions are £4.80 per pair (without VAT £4).

OUR SOCKS & HOSIERY

Whether you're affected by arthritis, swelling or diabetes or just looking for exceptional comfort, you'll find socks and hosiery to meet your need. Look out for our exclusive extra roomy products which are specially designed to fit swollen feet and legs. We also have a range of seam-free, diabetic-friendly socks.

WOMEN'S FOOTWEAR

ALL OUR WOMEN'S STYLES
ARE **extra roomy**
6E FITTING



WOMEN'S FOOTWEAR
5-52



MEN'S FOOTWEAR 53-79



SOCKS 80-88



HOSIERY 89-95



Julia

Warm and comfy in equal measures, this boot is a firm favourite. Featuring a soft, stretchy elastane front which won't put pressure on painful toes, joints or swelling. The back section is made from leather to ensure adequate support around the ankle. This versatile boot looks great with boot-cut trousers or jeans for a stylish, seasonal look.

Sizes: 3 – 9 • Half sizes available

extra roomy 6E fitting

Code UC

£89

£74.17 without VAT



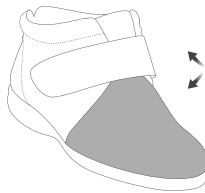
HIDDEN
DEPTH



DIABETIC
FRIENDLY



STRAP EXTENSIONS
AVAILABLE



STRETCHY
ELASTANE

Loganberry
Leather/
Elastane



Navy
Leather/
Elastane



Black
Leather/
Elastane



SMART, ROOMY & EASY TO GET ON

- > Cushioned Sanitized® insole can be removed to fit an orthotic
- > Touch-fastening strap adjusts to fit swelling



Luana

Crafted from hand-polished leathers, this flattering boot opens right out so it's easy to put on a swollen foot. The nubuck strap features a scalloped edge for a stylish touch, and is adjustable for a custom fit. With a deep, seam-free front for problem toes, the padded collar provides stability and support. A soft, cushioned lining cossets your feet in comfort while the cushioned insole feels fabulous underfoot.

Sizes: 3 – 9*

Half sizes available from 4½ to 8½

extra roomy 6E fitting

Code LL

£92

£76.67 without VAT



HIDDEN DEPTH



DIABETIC FRIENDLY



STRAP EXTENSIONS AVAILABLE

**Size 3 only available in Claret & Black*



Claret Leather



Navy Leather



Black Leather

Megan

Thanks to the stylish design and 'hidden depth', you wouldn't know these gorgeous boots are specially designed to fit swollen feet. Lightweight and easy to get on, the soft, supple leather moulds to your foot while the antique-effect sole gives a contemporary, premium look. The sumptuous underfoot cushioning, padded collar and tongue, and faux fur lining make this an exceptionally comfy and cosy boot.

Sizes: 4 – 9 • Half sizes available

extra roomy 6E fitting

Code VX

£95

£79.17 without VAT



HIDDEN
DEPTH



DIABETIC
FRIENDLY

NEW



**Blue
Bouquet
Leather**



**Damson
Nubuck**



**Black
Nubuck**

NEW
COLOUR



SOFT, SEAM-FREE & SEASONAL

- > Seam-free toe for added comfort
- > Sole is flexible, shock-absorbing & hard-wearing
- > Faux fur lining for added warmth
- > Cushioned Sanitized® insole can be removed to fit an orthotic



Martha

A contemporary, casual boot, boasting a seam-free toe and a faux fur lining to cosset the most sensitive of feet in comfort. The simple touch-fastening allows for a good opening for foot access, accommodating moderate swelling, and providing an adjustable fit around the upper foot.

Sizes: 4 – 9 • Half sizes available
extra roomy 6E fitting

Code HE
£95
£79.17 without VAT



HIDDEN
DEPTH



DIABETIC
FRIENDLY



STRAP EXTENSIONS
AVAILABLE

**Marigold
Nubuck**



**Black
Cobalt
Rose
Leather**



**Autumn
Floral
Leather**



**Cocoa
Nubuck**





EASY ACCESS, EVERYDAY STYLE

- > Double zip fastenings make it easy to get on & off
- > Cushioned Sanitized® insole can be removed to fit an orthotic
- > Hand-brushed, antique-effect sole gives a premium look (Sapphire Blue & Autumn Floral only)
- > Lace adjusts to fit a range of swelling



New Mimi

This stylish, contemporary boot features a double zip fastening for ultra-easy access – once the laces are adjusted for your fit, you can slip them on and off with ease. With a soft, cushioned collar and on-trend cup sole these everyday boots are both smart and practical for cooler days.

Sizes: 4 – 9 • Half sizes available
extra roomy 6E fitting

Code MIM

£99

£82.50 without VAT



HIDDEN DEPTH



DIABETIC FRIENDLY



Sapphire Blue Nubuck



Black Leather/Suede



Autumn Floral Leather

CosyTex™

EMBRACE THE ELEMENTS



- > Deep collar offers additional stability around the ankle
- > Waterproof lace adjusts to fit a range of swelling
- > Seam-free toe area is great for problem toes

Moose

Enjoy the great outdoors with our 100% waterproof boot. Made from water-repellent nubuck combined with our breathable, windproof and waterproof CosyTex™ membrane to keep feet fresh, warm and dry. With a terrain-friendly, cleated sole for good grip, that is also shock-absorbing for extra comfort. The soft, felt collar and hiking-inspired hook fastenings are both functional and stylish.

Sizes: 4 – 9 • Half sizes available
extra roomy 6E fitting

Code MSE

£115

£95.83 without VAT



HIDDEN
DEPTH



DIABETIC
FRIENDLY



Winter Red Nubuck



Cocoa Nubuck



Charcoal Nubuck

HIGH-PERFORMANCE MOOSE

Designed for more challenging conditions, this high-performance waterproof style has a special 'self-clearing' tread that works extremely well in mud, ice and snow.

Graphite
Waxed Leather



Code MSX **£120** **£100** without VAT

- > Soft, padded collar & tongue for greater comfort
- > Seam-free toe area is ideal for problem toes
- > Cushioned footbed can be removed to fit an orthotic

**Maisie
Dijon
Waxed
Leather**

**Maisie
High-Performance
Winter Red
Waxed Leather**

**Maisie
Charcoal
Nubuck**

Maisie

Designed for walking and able to fit a swollen foot, this 100% waterproof shoe is perfect for those looking for comfort and support. The uppers are made from breathable, windproof and waterproof CosyTex™ to keep feet dry and protected and you can choose from our cleated sole or our "High-Performance" version which has a special 'self-clearing' tread that works well in mud, ice and snow.

Sizes: 4 – 9 • Half sizes available
extra roomy 6E fitting

**Maisie
Code MAI**
£110 £91.67 without VAT

**Maisie High-Performance
Code MAH**
£115 £95.83 without VAT



HIDDEN
DEPTH



STRAP
EXTENSIONS
AVAILABLE



DIABETIC
FRIENDLY



OUR SPORTS PERFORMANCE RANGE

- Moisture-wicking & breathable footbed
- Breathable, seamless lining throughout
- The breathable mesh upper is flexible & supportive
- Heel specifically designed to give excellent stability
- Lace & strap fastenings adjust to fit swelling

“Sporty, modern and super comfortable all around my foot. The amazing underfoot support gives me a spring in my step all day long.”

LIZ - COSYFEET
SHOP MANAGER
AND FITTING EXPERT

Viva
Navy
Mesh/
Leather



Vamos
Black
Mesh/
Leather



Viva White
Mesh/Leather

Vamos Navy
Mesh/Leather

Viva Black
Mesh/Leather



Viva & Vamos

Developed alongside researchers from the University of Exeter, our Sport Active™ collection is a range of specially designed sports shoes for those with a more active lifestyle. They feature a double density sole for excellent underfoot cushioning and are engineered to provide enhanced grip and durability. The upper has been styled to give a high level of support and stability using materials selected to allow stretch and freedom for optimum foot comfort. Viva and Vamos boast all the necessary performance attributes for active sport for older feet, without compromising on our superior extra roomy comfort.

Sizes: 4 – 9

Half sizes available

extra roomy 6E fitting

Viva
Vamos
£99

Code VI
Code VO

£82.50 without VAT

SPORT
ACTIVE™ WITH DOUBLE
DENSITY SOLE

Shock-absorbing high-density
foam footbed minimises
impact on joints

Stretchy & flexible material
conforms to the shape of the foot



Sole provides lateral support without compromising on underfoot flexibility



DIABETIC
FRIENDLY



STRAP
EXTENSIONS
AVAILABLE *

*Strap extensions available for Vamos only

Jo-Jo

Crafted from beautifully soft, premium leathers, this fashionable lace-up gives you high-street style along with fabulous comfort and a flexible fit. A wardrobe staple, it looks great with everything; from dresses to tailored trousers to your favourite pair of jeans.

Sizes: 4 – 9 • Half sizes available

extra roomy 6E fitting

Code **QT**

£89

£74.17 without VAT



HIDDEN DEPTH



DIABETIC FRIENDLY

**Black
Cobalt
Rose
Leather**



**Navy
Floral
Elastane/
Leather**



**Luna
White
Leather**



**Jet Black
Leather**



**Sunflower
Leather**



FABULOUS COMFORT, FLEXIBLE FIT

- > Touch-fastening straps adjust to fit swelling
- > Lined with soft, breathable fabric for greater comfort
- > Cushioned Sanitized® insole can be removed to fit an orthotic



“Comfortable, stylish and great value.”

FEEFO REVIEW

Gigi

Softly padded in all the right places, this trendy, premium leather style is exceptionally comfy. The twin touch-fastening straps adjust to fit swelling while the wide opening makes it easy to slip on and take off. The seam-free front, breathable lining and cushioned insole add the finishing touches to this stylish shoe.

Sizes: 4 – 9 • Half sizes available

extra roomy 6E fitting

Code QI
£89
£74.17 without VAT



HIDDEN DEPTH



DIABETIC FRIENDLY



STRAP EXTENSIONS AVAILABLE

Blue Bouquet
Leather



Black Cobalt Rose
Leather



Navy
Leather



Black
Nubuck



OUR EXTRA DEEP PROBLEM SOLVER

> Cushioned footbed can be removed to fit an orthotic

> Ideal if you have diabetes or sensitive feet



Taupe
Leather

Mink
Leather

Alison

Our best-selling, ultra-adjustable shoe fits a variety of tricky feet. Made on our deepest last, from beautifully soft leathers, it's very generous across the front so it's ideal if you need extra room for bunions or problem toes. Even if you're bandaged or very swollen across your foot it's really easy to put on, because it opens right out. With underfoot cushioning and a seam-free lining, it's pure bliss for sensitive feet.

bestseller

- > Shock-absorbing footbed adds stability to the foot & ankle
- > Seam-free, sanitised lining allows your feet to breathe
- > Extra deep toe area is great for problem toes & bunions



Claret
Leather

Lagoon
Leather

Black
Leather

Sizes: 3 – 10* • Half sizes available from 3½ – 8½ • **extra roomy** 6E fitting

Code UD **£89** **£74.17** without VAT



HIDDEN
DEPTH



STRAP EXTENSIONS
AVAILABLE



DIABETIC
FRIENDLY

*Size 10 only available in Mink and Black

ALL OUR WOMEN'S FOOTWEAR IS **extra roomy** 6E FITTING

CONTEMPORARY CASUALS

CUSHION
ACTIVE™

- > Zip-fastening makes it easy to get on & off
- > Cushioned textile lining cossets your feet
- > Comfort footbed can be removed to fit an orthotic



"I like the comfort and look."

FEFO REVIEW

Tango

In a choice of fabulous premium leathers, this stylish shock-absorbing shoe combines comfort with convenience. The comfort footbed cushions every step so knee and ankle joints are protected, while the contemporary zip fastening makes it easy to get on and off. Once the laces are adjusted to your liking, you can slip it on in seconds!

Sizes: 4 – 9 • Half sizes available
extra roomy 6E fitting

Code KF

£92

£76.67 without VAT



Navy Floral Nubuck/Elastane



Olive Shimmer Leather



Silver Grey Nubuck/Leather



Darcy

This classic style fits a range of foot shapes and swelling and has a deep, seam-free toe box so it's ideal for problem toes. The padded collar fits both swollen and slimmer ankles while the touch-fastening strap adjusts to fit a range of swelling. To complete your comfort, it has a cushioned Sanitized® insole that can be removed to fit an orthotic.

Sizes: 3 – 9 • Half sizes available

extra roomy 6E fitting

Code QP

£89

£74.17 without VAT



HIDDEN DEPTH



DIABETIC FRIENDLY

Lace up version Delia available
Ask for details

bestseller

Claret
Leather/
Suede



Navy
Leather/
Suede



Stone
Leather/
Suede



Black
Leather/
Suede





bestseller

SUPPORT WITH STRETCH

- > Stretchy upper that moulds to your feet
- > Coated with fabric protector so stain & water-resistant
- > Soft, padded collar for extra comfort & support
- > Cushioned Sanitized® insole can be removed to fit an orthotic



STRETCHY ELASTANE

Karena

This style is a great choice if your feet are swollen or misshapen as it accommodates a variety of foot shapes. Boasting a deep and roomy toe area with an elastane stretch front that is sympathetic to sensitive toes or joints, as well as a touch-fastening strap that allows for an adaptable fit.

Sizes: 3 – 9 • No half sizes available
extra roomy 6E fitting

Code OU
£82
£68.33 without VAT



HIDDEN DEPTH



DIABETIC FRIENDLY



STRAP EXTENSIONS AVAILABLE

Black Paisley
 Leather/
 Elastane



Loganberry
 Leather/
 Elastane



Navy
 Leather/
 Elastane



Taupe
 Leather/
 Elastane



Black
 Leather/
 Elastane



Sienna

Ideal if your feet are swollen or sensitive, this soft, stretchy shoe won't put pressure on painful joints or swelling. It's perfect for problem toes, thanks to the deep toe box and it's supportive around the heel. The flexible soles are hard-wearing so it's great for active feet.

Taupe
Leather/
Elastane

Sizes: 3 – 9 • No half sizes available

extra roomy 6E fitting

Code US

£82

£68.33 without VAT



HIDDEN
DEPTH



DIABETIC
FRIENDLY

> Secure lace-fastening
adjusts for a flexible fit

Navy
Leather/
Elastane



Black
Leather/
Elastane



STRETCHY
ELASTANE

Patty

This lightweight, extra roomy boot is made from soft, stretchy elastane and will fit very swollen feet and ankles as well as bandaged feet and legs. The style opens right out for easy foot access and the removable, odour-resistant insole makes it easy to insert your own orthotic.

Sizes: 3 – 9

No half sizes available

extra extra roomy fitting

Code VY

£105

£87.50 without VAT



HIDDEN
DEPTH



STRAP EXTENSIONS
AVAILABLE



DIABETIC
FRIENDLY

> Stretchy elastane is
coated with fabric
protector so stain
& water-resistant

Black
Elastane/
Leather



STRETCHY
ELASTANE

STRETCHY WHERE YOU NEED IT

- > Cushioned Sanitized® insole can be removed to fit an orthotic
- > Touch-fastening strap adjusts to fit swelling
- > Deep, seam-free front is great for problem toes



STRETCHY ELASTANE

Laura

The soft, stretchy elastane panels on this flattering shoe gently flex to fit swelling and bunions with ease. The touch-fastening strap adjusts to fit a range of swelling while the super-soft lining and cushioned insole cradle your feet in comfort.

Sizes: 3 – 9 • No half sizes available

extra roomy 6E fitting

Code **CK**

£79

£65.83 without VAT



HIDDEN DEPTH



DIABETIC FRIENDLY



STRAP EXTENSIONS AVAILABLE

Loganberry Floral
Leather/
Elastane



Black Floral
Leather/
Elastane



Stone Floral
Leather/
Elastane



Navy Floral
Leather/
Elastane





Audrey

For extra comfort and protection, the deep, roomy toe area has a soft, seam-free lining so there's nothing to rub or irritate. Cleverly designed so swollen feet look dainty and deep enough to fit a fairly large orthotic.

Sizes: 3 – 9 • *Half sizes available*
extra roomy 6E fitting

Code CU

£85

£70.83 without VAT



HIDDEN
DEPTH



STRAP EXTENSIONS
AVAILABLE



DIABETIC
FRIENDLY

Mocha
Leather



**Lipstick
Red**
Leather



Navy
Leather



Black
Leather



EASY ELEGANCE

- > Seam-free toe area is ideal for problem toes
- > Cushioned Sanitized® insole can be removed to fit an orthotic
- > Heel height 3.2cm (1¼")



NEW
COLOURS

Maggie May

Our classic dolly shoe Maggie May features a wedge sole making it perfect for casual wear and dressy occasions alike. With a lower cut at the front, it's ideal if you swell across the top of your foot or down to your toes. For tailor-made comfort that lasts all day, simply adjust the touch-fastening strap. Sumptuously soft leathers and nubucks complete the look.

Sizes: 3 – 9

Half sizes available from 4½ to 8½

extra roomy 6E fitting

Code QO
£85
£70.83 without VAT



HIDDEN DEPTH



DIABETIC FRIENDLY*



STRAP EXTENSIONS AVAILABLE

*Care is recommended with this low-cut style

- Lipstick Red** Leather

NEW
- Black Marble Snake** Leather

NEW
- Safari** Leather
- Sapphire Blue** Nubuck
- Black** Leather

Paradise

Part shoe, part sandal, this 'on-trend' style keeps feet cool but protected so you can wear it all year round. Made from soft leather, it's very accommodating and has a deep, seam-free toe area so it's great for problem toes. The adjustable touch-fastening strap and removable insole help ensure a perfect fit.

Sizes: 3 – 10*

Half sizes available from 3½ – 8½

extra roomy 6E fitting

Code **UF**

£82

£68.33 without VAT



HIDDEN
DEPTH



STRAP EXTENSIONS
AVAILABLE



DIABETIC
FRIENDLY

*Size 10 only available in Stone & Black

NEW



Marigold
Nubuck



Ocean
Leather/
Nubuck



Stone
Leather



Black
Leather



NEW
COLOUR

bestseller

A DRESSY SHOE WITH A SECRET!

- > Fabric-lined for slipper-soft comfort
- > Seam-free toe for extra comfort
- > Cushioned Sanitized® insole can be removed to fit an orthotic



bestseller

Carmen

One of our favourite dressy shoes, Carmen features a discreet touch-fastening strap with decorative button that opens up to reveal a fabric gusset. This gusset gently stretches to accommodate swollen feet, to provide greater comfort and a better fit. Our elastane versions have a stretchy front that won't put pressure on swollen or sensitive toes. Both options look great with any formalwear.

Sizes: 4 – 9 • Half sizes available
extra roomy 6E fitting

Code QC

£79

£65.83 without VAT

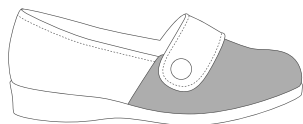
**Black
Croc Print
Patent**



**Taupe
Leather**




**STRETCHY
ELASTANE**



**Black
Leather/
Elastane**



**Navy
Leather/
Elastane**



DAINTY & ELEGANT



- Soft collar for extra comfort & support
- Touch-fastening strap adjusts to fit a range of swelling
- Cushioned Sanitized® insole can be removed to fit an orthotic
- Heel height 3.2cm (1¼")

New Hayley

Give your look a lift with our flattering new T-bar style. The adjustable touch-fastening strap makes it easy to find the perfect fit. Pretty cut-out detailing provides discreet breathability, while the padded collar ensures ultimate comfort for swollen ankles. Finished on a slight wedge heel, making it an ideal dressy style.

Sizes: 4 – 9 • Half sizes available
extra roomy 6E fitting

Code **HLY**

£82

£68.33 without VAT



HIDDEN
DEPTH



DIABETIC
FRIENDLY



STRAP EXTENSIONS
AVAILABLE



Black Patent



Black Marble Snake Leather



Navy Leather

Harriet

This modern take on the timeless Mary-Jane style, hides depth and width beautifully under the slim touch-fastening strap and delicate scalloped detailing. The flexible yet hard-wearing sole features a stylish wedge for those seeking Cosyfeet comfort with a slight heel, and the padded collar fits both swollen and slimmer ankles.

- > Soft collar for extra comfort & support
- > Touch-fastening strap adjusts to fit a range of swelling
- > Cushioned Sanitized® insole can be removed to fit an orthotic
- > Heel height 3.2cm (1¼")

Sizes: 4 – 9 • *Half sizes available*

extra roomy 6E fitting

Code HD

£82

£68.33 without VAT



HIDDEN
DEPTH



DIABETIC
FRIENDLY



STRAP EXTENSIONS
AVAILABLE



**Ditsy
Sparkle
Leather**



**Black
Cobalt
Rose
Leather**



**Black
Croc
Print
Patent**



FLATTER YOUR FEET

- > Cushioned footbed can be removed for extra depth or to fit an orthotic
- > Secure, touch-fastening strap adjusts to fit a range of swelling

NEW
COLOUR



Mulberry
Apache

Black
Apache

Koryl

Bring a touch of glamour to any outfit with this flattering shoe. The touch-fastening strap adjusts to fit a range of swelling while the cushioned footbed is removable for extra depth or to fit an orthotic.

“Excellent shoes for my feet that are awkward due to diabetes. Will definitely be purchasing again.”

FEFEO REVIEW

- > Stiffeners in heel area give a comfortable & secure fit
- > Seam-free front is ideal for sensitive toes

bestseller

NEW
COLOUR

NEW
COLOUR



Black Zebra
Acrylic

Gold Snake
Acrylic

Scarlett Zebra
Acrylic

Sizes: 3 – 9 • No half sizes available • **extra roomy** 6E fitting

Code **G6** **£52** **£43.33** without VAT



DIABETIC
FRIENDLY



STRAP EXTENSIONS
AVAILABLE



MADE IN
BRITAIN

A SOFT & STRETCHY CASUAL

- > Cushioned footbed and additional insole can be removed for extra depth or to fit an orthotic
- > Secure, touch-fastening strap adjusts to fit a range of swelling
- > Coated with fabric protector so stain & water-resistant



Spicy

Our neat-looking, water-resistant house shoe is made from elastane, so it stretches to accommodate bunions, hammer toes, bandaging and swelling with ease. Featuring a plush lining and cushioning for extra comfort, it provides both the softness of a fabric style along with the protection of a shoe.



STRETCHY ELASTANE

Sizes: 3 – 9 • No half sizes available • **extra roomy** 6E fitting

Code H2 **£59** **£49.17** without VAT



DIABETIC FRIENDLY



STRAP EXTENSIONS AVAILABLE



MADE IN BRITAIN



Latte Microfibre/Elastane



Loganberry Microfibre/Elastane



Black Microfibre/Elastane

- > Secure, touch-fastening strap adjusts to fit a range of swelling
- > Stiffeners in heel area give a comfortable & secure fit
- > Cushioned footbed can be removed for extra depth or to fit an orthotic
- > Seam-free toe area is ideal for sore or swollen toes

bestseller



Skye

This luxurious-looking style is plush and velvety to the touch. Combining the support of a shoe with the sumptuous, softness of a slipper it's the perfect choice if you have very sensitive feet. This versatile house shoe can be worn indoors if you need more support than a slipper, or outdoors on dry days.

Sizes: 3 – 9

No half sizes available

extra roomy 6E fitting

Code G2

£49

£40.83 without VAT



DIABETIC
FRIENDLY



MADE IN
BRITAIN



STRAP EXTENSIONS
AVAILABLE

Grey
Microfibre



Burgundy
Microfibre



Navy
Microfibre



Latte
Microfibre



Black
Microfibre



Mooch Damson
Wool-mix

Mosey Turquoise
Wool-mix

Mooch Jade
Wool-mix



- > Machine washable at 30°C on a wool delicate setting (Footbed not washable, remove before washing)
- > Flexible leather and TPU sole is suitable for indoor & outdoor wear
- > Small 'lip' around the heel of Mosey so less likely to slip off
- > Cushioned 'airflow' footbed can be removed to fit an orthotic
- > Wool-mix uppers & lining

Mosey & Moch

Slip into cosy comfort with our Purewool™ shoe and mule. Featuring a distinctively Scandinavian design, with TPU pads on the leather sole, they are perfect for wearing around the house, or nipping out during the day. The soft wool gently cossets the foot, moulding to fit your natural contours, as well as being moisture-wicking and naturally regulating temperature. Put them on in the morning and you'll forget you're wearing them by the afternoon!

Sizes: 4 – 9 • No half sizes available
extra roomy 6E fitting

Mosey* **Code R8**
Moch **Code R9**
£79
£65.83 without VAT



HIDDEN DEPTH



DIABETIC* FRIENDLY

*Caution is advised with Mosey as this is a backless style



Shelley

Perfect if you suffer with hot feet but want your toes covered. The pretty punch detail and odour-resistant insole combine to keep feet cool and fresh. The adjustable strap, cushioned sole and super-soft lining add to the comfort of this flattering, easy-to-wear style.

Sizes: 4 – 9 • Half sizes available
extra roomy 6E fitting

Code YB
£82
£68.33 without VAT



HIDDEN
DEPTH



STRAP EXTENSIONS
AVAILABLE



DIABETIC
FRIENDLY

**Light
Tan
Leather**



**Stone
Leather**



**Ocean
Nubuck**



**Navy
Leather**



- > Opens right out so easy to get on & off
- > Touch-fastening straps give a flexible fit for minor to very swollen feet
- > Punched leather uppers keep feet cool & comfy

bestseller



Ocean
Nubuck



Navy
Leather



Taupe
Leather



Black
Leather

Connie

Lightweight, supportive and ultra-adjustable, our ever-popular Connie comfortably fits a range of swelling. The premium uppers are soft and kind while the spongy footbed and shock-absorbing sole give you blissful, underfoot comfort.

Sizes: 3 – 9 • Half sizes available
extra roomy 6E fitting

Code UH

£75

£62.50 without VAT



DIABETIC
FRIENDLY *



STRAP EXTENSIONS
AVAILABLE

**Unless advised to avoid open-toed styles*

STRETCH-TO-FIT SANDAL

- > Secure, touch-fastening straps adjust to fit swollen or misshapen feet
- > Closed back with padded collar for comfort & support
- > Opens out so it's easy to get on & off swollen feet



STRETCHY ELASTANE

Hop

Stretchy and super-soft, this sandal is brilliant at fitting bunions, misshapen feet and swelling, to provide a fit that feels truly made-to-measure. With a supportive back, enhanced underfoot cushioning, and a shock-absorbing sole this style is pure joy to wear.

Sizes: 4 – 9 • Half sizes available

extra roomy 6E fitting

Code ZM

£75

£62.50 without VAT



DIABETIC FRIENDLY*



STRAP EXTENSIONS AVAILABLE

Stone Floral
Leather/
Elastane



Navy
Leather/
Elastane



Taupe
Leather/
Elastane



Black
Leather/
Elastane



*Unless advised to avoid open-toed styles



bestseller

SOFT, WARM, SUPPORTIVE

- > Slipper & insole machine washable at 30°C – separate slipper & insole prior to washing
- > Fabric gives to accommodate swelling, bunions & hammer toes



- > Cushioned insole can be removed for extra depth or to fit an orthotic

- > Flexible rubber sole is suitable for indoor & outdoor wear

Holly

Our bestselling slipper is soft, yet supportive. With a cushioned insole for optimum underfoot comfort, it has a broad toe shape and is seam-free at the front making it ideal for problem or sensitive toes. It's machine washable, and the touch-fastening strap easily adjusts to fit a range of swelling.

Sizes: 3 – 9 • No half sizes available

extra roomy 6E fitting

Code F8 **£42** **£35** without VAT



Holly in Navy can be purchased in half pairs & mixed sizes (ask for details)

Pink Check
Wool-mix



Burgundy Trilobal



Plum Floral Trilobal



Navy Trilobal



Midnight Floral Trilobal



WRAP AROUND COMFORT

➤ Slipper & insole machine washable at 30°C – separate slipper & insole prior to washing

➤ Opens out so it's easy to get on

➤ Flexible rubber sole is suitable for indoor & outdoor wear

➤ Cushioned insole can be removed for extra depth or to fit an orthotic



**Wine
Floral
Trilobal**



**Midnight
Floral
Trilobal**



**Navy
Trilobal**



**Plum
Trilobal**

Elise

Soft, warm and supportive, this traditional bootee slipper offers wrap-around comfort. The wide, touch-fastening strap adjusts to fit swelling and provides a secure fit around the ankle. Featuring a broad toe shape, with space for problem toes, it's also very comfy underfoot thanks to the soft, cushioned insole.

Sizes: 3 – 9 • No half sizes available
extra roomy 6E fitting

Code E4
£42
£35 without VAT



STRAP EXTENSIONS
AVAILABLE



MADE IN
BRITAIN

Elise in Navy can be purchased in half pairs & mixed sizes (ask for details)

Diane

The perfect choice if you like to be able to slip your slippers on and off. Designed with a v-opening to accommodate swelling or bandaging, the touch-fastening strap can be pre-adjusted to fit a variety of foot shapes and sizes then it can simply be slipped on and off as needed. It also benefits from a broad seam-free toe area, removable cushioned insole and rubber sole suitable for indoor and outdoor wear.

Sizes: 3 – 9 • No half sizes available

extra roomy 6E fitting

Code B10

£42

£35 without VAT



STRAP EXTENSIONS
AVAILABLE



MADE IN
BRITAIN

> Slipper & insole machine washable at 30°C



**Wine
Floral
Trilobal**



**Navy
Trilobal**



**Plum
Floral
Trilobal**



**Jade
Floral
Trilobal**



**Plum
Trilobal**



bestseller



> Supportive back gives extra stability

> Suitable for indoor & outdoor wear

> Machine washable at 40°C

> Broad, seam-free toe is ideal for swelling or problem toes

> Cushioned footbed can be removed for extra depth or to fit an orthotic

Amelia

This supportive house shoe style combines the comfort of a slipper with the support of a shoe. Twin touch-fastening straps offer a flexible fit, and the durable rubber sole is suitable for both indoor and outdoor use. Machine washable, it's ideal if you're active indoors but still want to feel relaxed and comfortable.

Sizes: 3 – 9 • No half sizes available

extra roomy 6E fitting

Code **H3**

£45

£37.50 without VAT



DIABETIC FRIENDLY



MADE IN BRITAIN



STRAP EXTENSIONS AVAILABLE



Navy Trilobal



Burgundy Trilobal

“Comfortable. Excellent quality, superb fit and lovely and warm.”

FEFFO REVIEW

OUR ULTRA-ROOMY SLIPPER



> Slipper & insole machine washable at 30°C – separate slipper & insole prior to washing

> Cushioned insole can be removed to fit an orthotic

Emma

Designed for extremely swollen or heavily bandaged feet, this versatile, wrap-around style has a touch-fastening strap at the back of the foot as well as across the top so it's fully adjustable. It opens out completely flat, so it's exceptionally easy to put on and can be 'rolled' up around the foot to give you a snug and secure fit. The deep, seam-free front accommodates swelling, bandaging, bunions and problem toes while the cushioned insole feels fabulous underfoot.



Plum Floral Trilobal



Navy Trilobal

Sizes: 3 – 9 • No half sizes available • **extra extraroomy** fitting

Code **E10** **£52** **£43.33** without VAT



DIABETIC FRIENDLY



STRAP EXTENSIONS AVAILABLE



MADE IN BRITAIN

- > Warm cushioned insole can be removed for extra depth or to fit an orthotic
- > Slipper & insole machine washable at 30°C – separate slipper & insole prior to washing
- > Adjustable touch-fastening strap helps provide a secure fit
- > Seam-free, so great for sensitive toes

NEW
COLOUR



NEW



Leopard Plush Velour



Fuchsia Floral Velour



French Navy Floral Velour



Burgundy Floral Velour

Snuggly

This beautifully soft, warm-lined slipper provides year-round warmth. Plush and velvety to the touch, it features a seam-free toe area and soft padded collar for extra comfort. The flexible rubber sole is suitable for indoor and outdoor use, while the touch-fastening strap adjusts to fit a range of swelling.

Sizes: 3 – 9 • No half sizes available

extra roomy 6E fitting

Code J9

£49

£40.83 without VAT



DIABETIC
FRIENDLY



MADE IN
BRITAIN



STRAP EXTENSIONS
AVAILABLE

NESTLE IN SUPREME SOFTNESS

- > Slipper & insole machine washable at 30°C – separate slipper & insole prior to washing
- > Seam-free, so great for sensitive toes

NEW
COLOUR



Cuddly

Indulge your feet in luxury with our cosy slip-on style. This seam-free, warm-lined slipper is beautifully soft inside and out. The cosy collar provides added comfort to really give your feet a cuddle. The warm, removable cushioned insole allows for extra depth or can accommodate an orthotic.

Sizes: 3 – 9 • No half sizes available
extra roomy 6E fitting

Code J8

£49

£40.83 without VAT



DIABETIC
FRIENDLY



MADE IN
BRITAIN

NEW



Zebra Plush Velour



Beige Floral Velour



Burgundy Velour

YEAR-ROUND WARMTH

Dreamy

Cocoon cold feet in warmth and comfort with these ultra-soft slippers. The snugly lining and bootee design are warm and insulating. Turn up the collar for extra warmth, to ensure feet and ankles stay cosy. The sumptuous, breathable uppers give a luxurious look and feel while the leather detail adds a stylish touch.

Sizes: 3 – 9 • No half sizes available

extra roomy 6E fitting

Code P2

£49

£40.83 without VAT



MADE IN
BRITAIN

NEW
COLOUR

NEW



**Navy Floral
Embroidered
Acrylic**



**Camel
Mock Suede**



**Loganberry
Mock Suede**



- > Secure, touch-fastening straps adjust to fit swollen or misshapen feet
- > Opens right out so it's easy to slip on a very swollen foot
- > Machine washable at 30°C



Milly

This soft, cotton-mix slipper will help keep feet cool. Featuring a flexible, rubber sole, this style also works well as a sandal. The straps adjust to fit very swollen or bandaged feet, while the cushioned, towelling footbed offers great underfoot comfort.

Sizes: 3 – 9 • No half sizes available • **extra roomy** 6E fitting

Code H4 **£42** **£35** without VAT



DIABETIC*
FRIENDLY



STRAP EXTENSIONS
AVAILABLE



MADE IN
BRITAIN

**Unless advised to avoid open-toed styles*



Beige/Pink Floral Cotton-mix



Blue/Lilac Floral Cotton-mix



Navy Cotton-mix

Jilly

Keep swollen feet comfy and cool, all year round, with these touch-fastening, cotton-mix slippers. Soft, secure and adjustable, they're cushioned underfoot for extra comfort and can double-up as a lightweight shoe if your feet are very sensitive.

Sizes: 3 – 9 • No half sizes available

extra roomy 6E fitting

Code J1

£42

£35 without VAT



DIABETIC FRIENDLY



STRAP EXTENSIONS AVAILABLE



MADE IN BRITAIN



Pale Blue
Cotton-mix

> Machine washable at 40°C



Black Cotton-mix



Cream Cotton-mix

Sally

These, pretty cotton-lined slipper-shoes are ideal if you suffer with hot feet.

They're cushioned underfoot for extra comfort and are very easy to put on.

Simply pre-adjust the touch-fastening strap to fit your foot shape and slip them on.

Sizes: 3 – 9 • No half sizes available

extra roomy 6E fitting

Code S1

£42

£35 without VAT



STRAP EXTENSIONS AVAILABLE



MADE IN BRITAIN

Navy/Pink Floral
Cotton-mix



Beige/Lilac Floral Cotton-mix



Navy Cotton-mix

> Roomy, seam-free front is great for sensitive toes



> Machine washable at 40°C

EMBRACE THE WONDERS OF WOOL

purewool™

- > Touch-fastening strap adjusts to fit swelling
- > Cushioned 'airflow' footbed can be removed to fit an orthotic
- > Machine washable at 30°C on a wool delicate setting (Footbed not washable, remove before washing)



Frieda

Stylish and supportive, our original Scandinavian-inspired slipper is beautifully soft and warm. Made from wool, it gently moulds to the shape of your foot for an incredibly comfy fit. Wool can also minimise odour, regulate temperature and wick away moisture to keep feet fresh and dry. Virtually seam-free, and very comfy underfoot, it's bliss for sensitive feet. The rubber soles can be worn outside.

Sizes: 4 – 9 • No half sizes available

extra roomy 6E fitting

Code R2

£79

£65.83 without VAT



Feline
Wool-mix



Charcoal Feline
Wool-mix



French Navy
Wool-mix



Light Grey
Wool-mix



Aubergine
Wool-mix



LUXURIOUS COMFORT

purewool™

- > Wool-mix uppers & lining
- > Small 'lip' around heel so less likely to slip off
- > Machine washable at 30°C on a wool delicate setting (Footbed not washable, remove before washing)



NEW
COLOUR

NEW



**Grey
Multi
Wool-mix**



**Sky Cable
Knit
Wool-mix**



**Midnight
Feline
Wool-mix**



**Purple
Floral
Wool-mix**



***Sheepskin
Lined Ruby
Wool-mix
(not washable)**

Donna

Encasing your feet in natural warmth and softness, this beautiful wool mule slipper features a cushioned insole that cossets your feet whilst encouraging generous airflow. For added luxury, choose our gorgeous sheepskin lined option enhancing the seam-free toe and making it ideal for sensitive feet.

Sizes: 4 – 9 • No half sizes available
extra roomy 6E fitting

Standard Lining Code R6
£79 £65.83 without VAT

***Sheepskin Lined Code R7**
£99 £82.50 without VAT



HIDDEN
DEPTH



DIABETIC*
FRIENDLY

**Unless advised to avoid backless styles*



MEN'S FOOTWEAR

ALL OUR MEN'S STYLES ARE **extra roomy** 3H FITTING

BOOTS MADE FOR WALKING

CosyTex™

- Cushioned 'airflow' footbed can be removed to fit an orthotic
- Padded collar fits both swollen & slimmer ankles
- Roomier than they look due to 'hidden depth' design
- Seam-free toe for extra comfort

Shoe version Stanley available
Ask for details

Livingstone

Whatever the weather, you can be sure your feet will be warm and protected with these CosyTex™ boots. Now with our High-Performance sole, the 'self-clearing' tread works extremely well in mud, ice and snow. The waxed leathers are water-repellent, while the breathable, windproof and 100% waterproof CosyTex™ membrane keeps feet fresh and dry.

Sizes: 7 – 13 • Half sizes available
extra roomy 3H fitting

High-Performance

Code YLX

£155

£129.17 without VAT



New High-Performance Bison
Waxed Leather



New High-Performance Espresso
Waxed Leather

Scott

Enjoy 100% waterproof protection along with all-round cushioning and a durable sole that's perfect for walking. This premium waxed, leather boot is also windproof and breathable, ensuring feet stay comfy, warm and dry. It's easy to slip on and off and offers great fitting flexibility thanks to the adjustable, touch-fastening strap. New colour Moorland has the added benefit of our High-Performance sole, which is ideal for more challenging terrains and weather conditions.

Sizes: 7 – 13 • Half sizes available

extra roomy 3H fitting

Standard Sole **Code SK**

£149 **£124.17** without VAT

***High-Performance** **Code SKX**

£159 **£132.50** without VAT



HIDDEN
DEPTH



DIABETIC
FRIENDLY



STRAP
EXTENSIONS
AVAILABLE



Tan
Waxed Nubuck



Black
Waxed Nubuck



***New**
High-Performance
Moorland
Waxed Leather





Alex

The perfect casual boot, Alex is both roomy and supportive. Made from soft leather, it features a deep toe area with decorative stitching that can't be felt from the inside. With a wide opening and split padded collar, it's very easy to get on and off swollen feet and ankles.

- > Touch-fastening strap adjusts to fit a range of swelling
- > Cushioned 'airflow' footbed can be removed to fit an orthotic
- > Lightweight, hard-wearing sole offers good grip

Sizes: 6 – 13

Half sizes available

extra roomy 3H fitting

Code UA

£105

£87.50 without VAT



DIABETIC
FRIENDLY



STRAP
EXTENSIONS
AVAILABLE

**Oxblood
Leather**



**Black
Leather**



FEEL THE COMFORT

bestseller

- > Secure, touch-fastening strap adjusts to fit swollen or misshapen feet
- > Softly padded across the instep & ankle for extra comfort & support
- > Cushioned 'airflow' footbed can be removed to fit an orthotic



Elvis

Featuring a durable sole with good tread, this ultra-comfy casual is ideal if you're active on your feet. Deep and accommodating, it fits swollen feet with ease. With a seam-free front, it's perfect for sore or problem toes while the soft, high-quality leather completes the comfort.

Sizes: 7 – 13 • Half sizes available
extra roomy 3H fitting

Code KR
£105
£87.50 without VAT



HIDDEN
DEPTH



DIABETIC
FRIENDLY



STRAP EXTENSIONS
AVAILABLE



Bison Waxed Leather



Moorland Waxed Leather



Black Leather

COMFY CASUALS WITH HIDDEN DEPTH

- > Secure, lace-fastening can be adjusted for a flexible fit
- > Cushioned 'airflow' footbed can be removed to fit an orthotic
- > Sole is flexible, shock-absorbing & hard-wearing



Max

This comfy, soft leather shoe is cleverly designed to fit swollen feet without compromising on style. It's very adjustable so it fits a variety of foot shapes and the tongue opens out so it's easy to put on.

"Best shoes I've ever purchased."

FEEFO REVIEW

Sizes: 6 – 13 • Half sizes available

extra roomy 3H fitting

Code FX

£99

£82.50 without VAT



Brown Leather



Black Leather

Mason

A Cosyfeet best-seller, this comfy leather casual has been cleverly designed to accommodate swollen feet without compromising on style. It's very adjustable, so it fits a variety of foot shapes and swelling, and the tongue opens right out so it's very easy to put on.

- > Touch-fastening strap adjusts to fit swollen or misshapen feet
- > Sole is flexible, shock-absorbing & hard-wearing
- > Cushioned 'airflow' footbed can be removed to fit an orthotic

Sizes: 6 – 13 • Half sizes available

extra roomy 3H fitting

Code FY

£99

£82.50 without VAT



HIDDEN
DEPTH



STRAP
EXTENSIONS
AVAILABLE

Brown
Leather



Black
Leather



Oxblood
Leather





Darby

Our handsome, roomy brogue is the perfect partner for work wear and formal wear. It has lots of room for swollen feet but still looks smart and streamlined. Crafted from soft, hand-finished leathers, it has a cushioned footbed and a lightweight, shock-absorbing sole for added comfort.

- > Cushioned 'airflow' footbed can be removed to fit an orthotic
- > Padded collar for extra comfort
- > Seam-free lining at front for problem toes
- > Deeper & roomier than it looks due to 'hidden depth' design

Sizes: 6 – 13 • *Half sizes available*

extra roomy 3H fitting

Code QD

£105

£87.50 without VAT



HIDDEN
DEPTH



DIABETIC
FRIENDLY

**Cognac
Leather**



**Black
Leather**



SMART STYLING

- > Cushioned 'airflow' footbed can be removed to fit an orthotic
- > Lining is seam-free at front so great for sensitive toes
- > Sole is light, shock-absorbing & hard-wearing

bestseller



“Good quality, perfect fit and very comfortable.”

FEEFO REVIEW

Jones

This smart yet soft leather shoe is very roomy. It has a deep, seam-free toe area so it's great for hammer toes, bunions and swelling. The fashionable, character stitching down the front can't be felt from the inside so you can still wear it if your feet are sore or sensitive.

Sizes: 6 – 13 • Half sizes available

extra roomy 3H fitting

Code QJ

£105

£87.50 without VAT



Brown Leather



Black Leather

EASY ON, EASY OFF

> Deep toe area is ideal for problem toes

> Sole is flexible, shock-absorbing & hard-wearing

> Fully padded tongue & collar give cushioned comfort

> Cushioned 'airflow' footbed can be removed to fit an orthotic

Bart

A wonderfully comfy shoe, the twin touch-fastening straps open right out making it easy to get on and off, even for very swollen feet. A deep toe area and seam-free side panels make it ideal for sore or sensitive feet. The soft, but robust, premium leather completes the comfort.

Sizes: 6 – 13 • Half sizes available

extra roomy 3H fitting

Code YY

£105

£87.50 without VAT



HIDDEN DEPTH



STRAP EXTENSIONS AVAILABLE

bestseller



Brown Leather



Black Leather

- > Padded collar & tongue for extra comfort
- > Seam-free toe area is ideal for problem toes
- > Sole is lightweight, durable & flexible
- > Hand-brushed, antique-effect sole gives a premium look



Lace version Ashley available
Ask for details

Angus

This premium, sporty-looking shoe features twin touch-fastening straps which adjust to fit a variety of swelling as well as a high instep. It opens right out making it easy to get on and off a swollen foot, while the cushioned 'airflow' footbed can be removed to fit an orthotic. Available in a variety of colours, it's the perfect wardrobe staple.

Sizes: 7 – 13 • Half sizes available

extra roomy 3H fitting

Code GG

£105

£87.50 without VAT



HIDDEN DEPTH



STRAP EXTENSIONS AVAILABLE

Navy Nubuck



Pecan Nubuck



Putty Nubuck



Denim Nubuck



Gregory

These soft, stretchy shoes give the support of a leather shoe with the seam-free comfort of a slipper. They're ideal for bunions or mis-shapen feet and won't put pressure on painful toes, joints or swelling.

Sizes: 6 – 13

No half sizes available

extra roomy 3H fitting

Code UG

£92

£76.67 without VAT



HIDDEN
DEPTH



DIABETIC
FRIENDLY



STRETCHY
ELASTANE



Black Leather/Elastane

**Brown
Leather/
Elastane**



Patrick

This incredibly roomy, lightweight boot is designed to fit very swollen or bandaged feet and ankles. It's made from soft, stretchy elastane that won't put pressure on swelling and has a removable insole for extra room or to fit an orthotic.

Sizes: 6 – 13

No half sizes available

extra extra roomy fitting

Code PM

£110

£91.67 without VAT



DIABETIC
FRIENDLY



STRAP EXTENSIONS
AVAILABLE

**Black
Elastane/
Leather**



STRETCHY
ELASTANE



STRETCH TO FIT COMFORT

> Cushioned 'airflow' footbed can be removed to fit an orthotic

> Secure, touch-fastening strap adjusts to fit swollen or misshapen feet

bestseller

> Padded tongue & collar give cushioned comfort

> Coated with fabric protector so stain & water-resistant



Ken

This soft, stretchy shoe is ideal for a variety of foot problems. The elastane front provides made-to-measure comfort as it conforms to your individual foot shape whilst the touch-fastening offers ample adjustment.



↖ ↗
↘ ↙
STRETCHY
ELASTANE

Sizes: 6 – 13 • No half sizes available **extra roomy** 3H fitting

Code **FM** **£92** **£76.67** without VAT



HIDDEN
DEPTH



DIABETIC
FRIENDLY



STRAP EXTENSIONS
AVAILABLE



Loam Leather/Elastane



Brown Leather/Elastane



Black Leather/Elastane

TIMELESS CLASSICS

- > Touch-fastening strap gives a flexible fit for swollen feet
- > Hand-stitched apron provides extra give
- > Cushioned 'airflow' footbed can be removed to fit an orthotic



Lace up version **Will** available
Ask for details

Woody

This attractive, premium boat shoe fits swollen feet with ease thanks to the special 'hidden depth' design. It's crafted from luxury leathers that gently mould to your feet and lined with soft leather. The shock-absorbing, 'airflow' footbed adds to the exceptional comfort of this timeless classic.

Sizes: **6 - 13** • *Half sizes available*
extra roomy 3H fitting

Code **VU**

£105

£87.50 without VAT



HIDDEN DEPTH



STRAP EXTENSIONS AVAILABLE



Navy Nubuck/Leather



Tan Nubuck/Leather



Chestnut Leather



New Ned

Designed for everyday use, this extremely comfy style is both smart and practical. Crafted from luxury leathers and nubucks, which mould to the feet, for a fit that is truly made-to-measure. The bellows tongue combined with a softly padded collar completes the comfort, while the touch-fastening strap is fully adjustable.

- > Fully padded tongue & collar provide cushioned comfort
- > Cushioned 'airflow' footbed can be removed to fit an orthotic
- > Sole is lightweight, durable & flexible
- > Deep seam-free toe area is ideal for problem toes

Sizes: 7 – 12

Half sizes available

extra roomy 3H fitting

Code NED

£105

£87.50 without VAT



HIDDEN
DEPTH



STRAP
EXTENSIONS
AVAILABLE

Tan
Nubuck/
Leather



Black
Leather



EASY, RELAXED STYLE

- > Deep, seam-free toe area is ideal for problem toes
- > Cushioned 'airflow' footbed can be removed to fit an orthotic
- > Sole is lightweight, durable & flexible



Andrew

The twin touch-fastening straps on this contemporary, sporty-looking shoe can adjust to fit a range of swelling. Featuring a breathable mesh lining and an 'airflow' footbed, this casual style helps keep feet fresh. The underfoot cushioning and soft padded collar and tongue offer exceptional comfort.

Sizes: 7 – 12

No half sizes available

extra roomy 3H fitting

Code A1

£82

£68.33 without VAT



HIDDEN
DEPTH



DIABETIC
FRIENDLY



STRAP
EXTENSIONS
AVAILABLE



MADE IN
BRITAIN

*“Really good quality,
very roomy, just like it
says and very stylish.”*

FEEFO REVIEW



Navy Canvas/Nubuck



Chocolate Canvas/Nubuck

Matty

This casual style is made from a combination of leather and canvas, and features a clever zip fastening for easy access. Once the laces are adjusted to your fit, slip them on and off with ease. With stylish trainer-like detailing, you'll enjoy all-day comfort thanks to the seam-free toe, breathable lining and underfoot cushioning, topped off with a soft, padded tongue and collar.

Sizes: 7 – 12

No half sizes available

extra roomy 3H fitting

Code A4

£82

£68.33 without VAT



HIDDEN
DEPTH



DIABETIC
FRIENDLY



MADE IN
BRITAIN

**Chocolate
Canvas/
Nubuck**



Navy Canvas/Nubuck

Matt

Update your seasonal look with this contemporary, leather and canvas casual. It combines practicality with a dash of style, thanks to the on-trend cup sole and sporty detailing. It's packed with special features to give you long-lasting comfort, including a seam-free toe, breathable lining and underfoot cushioning. A soft, padded tongue and collar add the finishing touch to this premium shoe.

Sizes: 7 – 12

No half sizes available

extra roomy 3H fitting

Code A9

£82

£68.33 without VAT



HIDDEN
DEPTH



DIABETIC
FRIENDLY



MADE IN
BRITAIN

**Grey
Canvas/
Nubuck**



*“Good fit. Good quality.
Excellent.”*

FEFEO REVIEW

Steven

Ideal for swollen or lightly bandaged feet, this touch-fastening style is very adjustable and easy to get on and off. The deep seam-free front is perfect for problem toes whilst the cushioned 'airflow' footbed can be removed to fit an orthotic.

Sizes: 7 – 13

No half sizes available

extra roomy 3H fitting

Code A7

£59

£49.17 without VAT

Bark
Poly-weave



> Lightweight rubber sole

> Shoe & footbed machine washable at 30°C – separate shoe & footbed prior to washing



HIDDEN DEPTH



STRAP EXTENSIONS AVAILABLE



MADE IN BRITAIN



Charcoal Poly-weave

James

The stretchy front of this slipper-soft shoe makes it perfect for bunions, hammer toes, bandaging and swelling whilst the heel part is designed to provide support where required. The touch-fastening strap allows easy access and ample adjustment. Lightweight and ultra-comfy underfoot, it's perfect for indoor and outdoor wear.

Sizes: 6 – 13*

No half sizes available

extra roomy 3H fitting

Code A3

£62

£51.67 without VAT

Navy
Elastane/Poly-weave



> Stretchy elastane is coated with fabric protector so stain & water resistant



DIABETIC FRIENDLY



STRAP EXTENSIONS AVAILABLE



MADE IN BRITAIN



Brown Elastane/Poly-weave



Black Elastane/Cotton

*Size 6 only available in Brown

Bruno

Made from robust, hand-finished leathers, this sporty-looking sandal has twin touch-fastening straps which adjust to fit swelling. The flexible sole is great for active feet while the soft, cushioned footbed and stretchy lining offer exceptional comfort.

Sizes: 7 – 13

No half sizes available

extra roomy 3H fitting

WE ADVISE YOU ORDER A SIZE SMALLER THAN YOUR NORMAL SHOE SIZE

Code VZ

£92

£76.67 without VAT



STRAP EXTENSIONS
AVAILABLE

**Brown
Waxed Leather**



"I can walk further and more comfortably in these sandals."

FEEFO REVIEW

Bingley

This is our most supportive men's sandal. It has a closed back which gives good ankle support and allows you to wear an orthotic. The adjustable straps hold the foot securely in place while the cushioned footbed and shock-absorbing sole give great underfoot comfort.

Sizes: 6 – 13 • No half sizes available

extra roomy 3H fitting

WE ADVISE YOU ORDER A SIZE SMALLER THAN YOUR NORMAL SHOE SIZE

Code FO

£92

£76.67 without VAT

**Moorland
Waxed Leather**



DIABETIC
FRIENDLY *



STRAP EXTENSIONS
AVAILABLE

*Unless
advised to avoid
open-toed
styles



Black Waxed Leather



Brown Waxed Leather



> Supportive around the heel

> Cushioned insole can be removed for extra depth or to fit an orthotic

> Flexible rubber sole is suitable for indoor & outdoor wear

Ronnie

A firm favourite, this roomy slipper is cushioned underfoot for greater comfort. A good choice for swollen feet thanks to the split at the front, and the seam-free toe area is ideal for problem toes. Easy to get on and off, you can pre-adjust the touch-fastening strap to fit your foot shape and simply slip it on.

Sizes: 6 – 13 • No half sizes available
extra roomy 3H fitting

Code T8

£49

£40.83 without VAT



Navy Plaid Wool-mix



Burgundy Check Acrylic



Charcoal Acrylic

> Slipper & insole machine washable at 30°C – separate slipper & insole prior to washing. Navy Plaid Wool-mix not washable

SOFT, SMART & SUPPORTIVE

- > Cushioned insole can be removed for extra depth or to fit an orthotic
- > Flexible, rubber sole is suitable for indoor & outdoor wear
- > Secure, touch-fastening strap adjusts to fit swollen or misshapen feet
- > Slipper & insole machine washable at 30°C – separate slipper & insole prior to washing



bestseller

Reggie

This smart, supportive slipper is cushioned underfoot for even greater comfort. It adjusts to fit swelling and the front is seam-free and roomy so it's great for swollen or sensitive toes. Thanks to the luxury warm fabric, it feels beautifully soft and cosy.

Sizes: 6 – 13 • No half sizes available
extra roomy 3H fitting

Code T4
£49
£40.83 without VAT



DIABETIC FRIENDLY



MADE IN BRITAIN



STRAP EXTENSIONS AVAILABLE

Burgundy Check
Acrylic



Blue Tartan
Wool-mix



Navy Russet Check
Acrylic



Retro Check
Wool-mix





bestseller

Richie

This soft yet supportive slipper has a cushioned insole so it's very comfy underfoot. It has a broad toe shape and is seam-free at the front so it's ideal for problem or sensitive toes. The touch-fastening strap adjusts to fit a range of swelling.

- > Flexible rubber sole is suitable for indoor & outdoor wear
- > Slipper & insole machine washable at 30°C – separate slipper & insole prior to washing

Sizes: 6 – 13 • No half sizes available
extra roomy 3H fitting

Code T1

£45

£37.50 without VAT



DIABETIC
FRIENDLY



STRAP EXTENSIONS
AVAILABLE



MADE IN
BRITAIN

Brown
Acrylic



Charcoal
Acrylic



Navy
Trilobal



Richie in Navy can be purchased in half pairs & mixed sizes (ask for details)

WINTERPROOF YOUR FEET

- > Warm, cushioned insole can be removed for extra depth or to fit an orthotic
- > Flexible rubber sole is suitable for indoor & outdoor wear
- > Seam-free toe area is ideal for sensitive toes
- > Supportive around the heel



Rudolph

This luxury, warm-lined slipper is a godsend if your feet feel the cold. The fleeced, faux fur lining gives you cosy comfort while the faux fur insole can be removed to give you extra depth.

Sizes: 7 – 13 • No half sizes available

extra roomy 3H fitting

Code Q2

£52

£43.33 without VAT



DIABETIC FRIENDLY



MADE IN BRITAIN



STRAP EXTENSIONS AVAILABLE

Ink Tartan
Wool-mix



Navy Marl Knit
Acrylic



Navy Teal Tartan
Wool-mix



Woodland Check
Wool-mix





- > Secure, touch-fastening strap adjusts to fit swollen or misshapen feet
- > Slipper & insole machine washable at 30°C – separate slipper & insole prior to washing
- > Flexible rubber sole is suitable for indoor & outdoor wear

Robbie

Warm and supportive, this soft, adjustable bootee features wrap-around comfort. Thanks to the cushioned insole, it's blissfully soft underfoot. The broad toe area has ample space for problem toes, and it opens right out making it easy to get on, even if your feet are very swollen. For feet that feel the cold, try our warm-lined version.

Sizes: 6 – 13 • *No half sizes available*
extra roomy 3H fitting

Standard Lining	Code M5
£49	£40.83 without VAT
*Warm-lined	Code M7
£52	£43.33 without VAT



Navy Russet Check
Acrylic



Charcoal
Acrylic



***Warm-lined Retro Check**
Wool-mix

Robbie in Charcoal can be purchased in half pairs & mixed sizes (ask for details)



EASY TO WEAR,
EASY TO LOVE

purewool™

Benny

An easy-on Scandi-style mule slipper that pampers your feet in the natural warm softness of wool. The cushioned footbed complements the indulgent features of this slipper whilst promoting generous airflow to wick away moisture and minimise odour. A simple, yet premium design capable of accommodating a variety of foot conditions. Also available in a luxurious sheepskin lined option.

- > Machine washable at 30°C on a wool delicate setting (footbed not washable, remove before washing)

Sizes: 7 – 12 • No half sizes available

extra roomy 3H fitting

***Sheepskin Lined Code W7**

£99 £82.50 without VAT

Standard Lining Code W6

£85 £70.83 without VAT



HIDDEN
DEPTH



DIABETIC
FRIENDLY *

**Unless advised to avoid backless styles*

***Sheepskin
Lined Imperial**
Wool-mix
(not washable)



Navy Marl Knit
Wool-mix



**Brown
Cable Knit**
Wool-mix



Jonny

This lightweight, open-toed style is ideal if you have problem toes or bandaged feet. It's very adjustable and supportive around the heel and is easy to put on a swollen foot. The acrylic version works well as a slipper-shoe while the leather version is ideal for wearing outdoors.

Sizes: 6 – 13 • *No half sizes available*
extra extra roomy fitting

Acrylic Code QZ

£65

£54.17 without VAT

Leather Code QY

£92

£76.67 without VAT

Charcoal Acrylic



> Cushioned & softly-lined for comfort



STRAP
EXTENSIONS
AVAILABLE



Brown Acrylic



Black Leather

Rowan

With an extra low opening so it's easy to put on, Rowan is designed to fit exceptional swelling or heavy bandaging and is suitable for both men and women. As the sole is EVA and the back is less supportive than our other styles, it may not be suitable if you're very active.

Sizes: 5 – 13
No half sizes available
extra extra roomy fitting

Suede Code XW

£69

£57.50 without VAT

Leather Code XY

£79

£65.83 without VAT

Burgundy Suede



DIABETIC
FRIENDLY



MADE IN
BRITAIN



Navy Suede



Black Leather

AN ULTRA-ADJUSTABLE SLIPPER FOR VERY SWOLLEN FEET



Ernest

This versatile, wrap-around style is designed to fit extremely swollen or heavily bandaged feet. It has a touch-fastening strap at the back of the foot as well as across the top so it's fully adjustable. It's really easy to put on as it opens out completely flat and can then be 'rolled up' around the foot to give a snug and secure fit. The deep, seam-free front accommodates swelling, bandaging, bunions and problem toes with ease while the cushioned insole adds to the comfort.

Sizes: 7 – 13 • No half sizes available • **extra extra roomy** fitting

Code **M2** **£55** **£45.83** without VAT



DIABETIC
FRIENDLY



STRAP EXTENSIONS
AVAILABLE



MADE IN
BRITAIN



Navy Trilobal



Charcoal Acrylic



MOST STYLES
AVAILABLE IN
**STANDARD &
extra roomy**
FITTINGS

THE MOST COMFORTABLE SOCKS YOU'LL EVER WEAR

Beautifully crafted and made to last, most of our socks are made in England by a family-owned business. Our suppliers use premium yarns and time-honoured techniques to create beautiful quality socks.



extra roomy FITTING

Exceptionally comfy and made with more material in the foot and leg area, our exclusive extra roomy fitting

is easy to get on and off a swollen foot.



COMFORT GRIP

The grippy cuff on these clever socks keeps them comfortably but firmly in place without exerting

pressure, leaving indents or cutting off circulation.



SEAM-FREE

Ideal if you have diabetes, sensitive feet or just want to feel really comfy.

Designed to stay up without cutting in or restricting circulation these socks have a smooth join at the toe that won't rub or irritate.



Softhold® TOP

With a relaxed fit you'll hardly know you're wearing these comfy socks. The special ribbed design

holds them securely but gently in place, so they don't cut in, restrict circulation or leave nasty marks.

EXCEPTIONALLY SWOLLEN FEET & LEGS?

Take a look at pages 87 and 91 for the roomiest socks and hosiery in our range.





ENJOY WARMTH & SOFTNESS

MERINO WOOL

Forget itchy, heavy wool. Our fabulous Merino socks are soft and lightweight. Naturally warm in winter and cool in summer they have excellent wicking to keep feet dry and are breathable and antimicrobial. Your feet will love them!

New Wool-rich Softhold® Seam-free

This soft, lightweight sock is made from fine-gauge Merino wool so it's warm without being bulky and won't take up room in your shoes. It's super-stretchy for a comfy fit and is naturally breathable so your feet stay fresh and dry. The Softhold® top won't dig in so all you feel is blissful comfort, while the smooth join at the toe won't rub or irritate sensitive feet. Thanks to its natural climate control, it's a perfect sock for all seasons.

	COLOUR	SIZE		
		S	M	L
	Burgundy	✓	✓	✓
	Black	✓	✓	✓
	Oatmeal	✓	✓	✓
	Navy	✓	✓	✓

3 PAIR PACK SINGLE COLOUR

Standard Fit **Code WRS** **£25**

extra roomy **Code WRX** **£26**



Calf Length

72% Merino wool,
23% Nylon,
5% LYCRA®



DIABETIC
FRIENDLY



MADE IN
BRITAIN



Calf Length

72% Merino wool,
27% Nylon,
1% LYCRA®



DIABETIC
FRIENDLY



MADE IN
BRITAIN



2 PAIR PACK SINGLE COLOUR

Standard Fit **Code FQ £24.50**

extraroomy Code FN £26

Wool-rich Softhold® Seam-free Cushioned Sole

This is a fantastic sock if you have diabetes or sensitive feet. It's gently cushioned on the sole, toe and heel for added protection and the smooth join at the toe won't rub or irritate. Made from soft, warm, lightweight Merino wool, the Softhold® top won't dig in so all you feel is blissful comfort. Our extra roomy option is ideal for swollen legs.

	COLOUR		SIZE	
	S	M	S	M

	Blue Marl	✓	✓
	Oatmeal	✓	✓
	Grey	✓	✓



Knee Length

70% Merino wool,
28% Nylon,
2% LYCRA®



MADE IN
BRITAIN

Wool-rich Knee High

Enjoy cosy, knee high warmth and comfort with this soft, lightweight sock. Made with fine Merino wool, it's warm without being thick or itchy and stretchy for enhanced comfort. Our extra roomy option is ideal for swollen legs.

Please note:

Knee highs may not
accommodate extreme swelling

	COLOUR			SIZE		
	S	M	L	S	M	L

	Oatmeal	✓	✓	✓
	Navy	—	✓	—
	Grey	—	✓	—
	Black	✓	✓	✓

1 PAIR PACK SINGLE COLOUR

Standard Fit **Code BY £16.50**

extraroomy Code BX £17.50



Knee Length

60% Merino wool,
39% Nylon,
1% LYCRA®



DIABETIC
FRIENDLY



MADE IN
BRITAIN



Calf Length

60% Merino wool,
39% Nylon,
1% LYCRA®



MADE IN
BRITAIN



Thermal Softhold® Seam-free Knee High

If you suffer from cold feet and legs, then this cosy sock is the one for you! With added warmth from the soft, heavier-gauge wool, it comes up to the knee so it's perfect for colder days. The smooth join at the toe is kind to tender feet and the Softhold® top won't dig in so it's exceptionally comfy to wear. Our extra roomy option is ideal for swollen legs.

Please note:

Knee highs may not accommodate extreme swelling

	COLOUR	SIZE		
		S	M	L
		4-7	6-11	11-13
	Oatmeal	✓	✓	✓
	Black	✓	✓	✓
	Navy	—	✓	—

1 PAIR PACK SINGLE COLOUR

Standard Fit **Code TQ £18**

extra roomy Code TF **£19**

Thermal Softhold®

Made from a high percentage of Merino wool these snugly socks are thicker than our wool-rich socks and will keep toes toasty. The Softhold® top won't dig in and the stretchy LYCRA® fibre enhances the fit and comfort. Our extra roomy option is ideal for swollen legs.

	COLOUR	SIZE		
		S	M	L
		4-7	6-11	11-13
	Moss	—	✓	—
	Black	✓	✓	✓
	Oatmeal	✓	✓	✓
	Grey	—	✓	—
	Navy	✓	✓	✓

3 PAIR PACK SINGLE COLOUR

Standard Fit **Code TH £26**

extra roomy Code ET **£27.50**



Calf Length
78% Cotton,
20% Nylon,
2% LYCRA®



MADE IN
BRITAIN



bestseller

KEEP FEET COOL, DRY & COMFY

Cotton-rich Softhold®

This is a beautifully-comfy, lightweight sock. Thanks to the Softhold® top, it won't cut in, restrict circulation or leave nasty marks. It's super-soft against your skin and the underfoot ventilation panel keeps feet cool and dry. It's hard-wearing, due to the nylon and stretchy for added comfort. Our extra roomy option is ideal for swollen legs.

"Soft and comfortable for swollen legs, cosy and lovely colour."

FEEFO REVIEW

3 PAIR PACK SINGLE COLOUR

Standard Fit **Code CR £19**

extraroomy Code EC £20.50

COLOUR	SIZE		
	S 4-7	M 6-11	L 11-13
 Aubergine	✓	✓	—
 Maize	✓	✓	—
 White	✓	✓	✓
 Lilac	✓	—	—
 Ultramarine	✓	✓	✓
 Grey	—	✓	✓
 Navy	✓	✓	✓
 Crimson	✓	✓	—
 Oatmeal	✓	✓	✓
 Black	✓	✓	✓
 Denim	✓	✓	—



Calf Length
98% Cotton,
2% LYCRA®



DIABETIC
FRIENDLY



MADE IN
BRITAIN

bestseller



Cotton-rich Softhold® Seam-free

This fine-gauge sock is so incredibly light, soft and comfy you'll forget you're even wearing it! Made for the fussiest of feet, it's super-stretchy for a perfect fit and has a smooth join at the toe that won't rub or irritate. The Softhold® top holds it gently in place and won't cut in or leave nasty marks. It wears well, washes well and won't take up room in your shoes. Our extra roomy option is ideal for swollen legs.

COLOUR		SIZE		
		S	M	L
	Beige	4-7	6-11	11-13
	Black	✓	✓	✓
	Coffee	✓	✓	—
	Grey	✓	✓	—
	Navy	✓	✓	✓

3 PAIR PACK SINGLE COLOUR

Standard Fit **Code DI £24.50**
extra roomy **Code DE £26**



Calf Length
98% Cotton,
2% LYCRA®



DIABETIC
FRIENDLY



Simcan Comfort

This is a really comfy cotton-rich sock! It's very stretchy so it gently moulds to all sorts of leg shapes and sizes. It stays up without sagging, cutting in or restricting your blood flow and has a smooth join at the toe for extra comfort. It's also easy to put on and take off a swollen foot.

COLOUR		SIZE		
		S	M	L
	White	4-7	7-11	11-14
	Oatmeal	✓	✓	✓
	Charcoal	✓	✓	✓
	Black	✓	✓	✓
	Navy	✓	✓	✓

3 PAIR PACK SINGLE COLOUR

Standard to roomy Fit
Code CA £27

Calf Length

70% Cotton,
26% Merino wool,
3% Nylon,
1% Elastane



DIABETIC
FRIENDLY



MADE IN
BRITAIN



2 PAIR PACK SINGLE COLOUR

Standard to **extra roomy** Fit

Code RY **£21.50**

Supreme Comfort

Luxury cotton & Merino wool

We think we've discovered the perfect sock! A blend of soft Merino wool and premium cotton, it's the ultimate in comfort. Super-stretchy for a superb fit, it even fits very swollen legs. It stays up gently without digging in and the smooth join at the toe won't rub your feet. It's soft to the touch but hard-wearing and the breathable yarn keeps feet fresh and dry.

	COLOUR		SIZE		
			S	M	L
	Navy		4-7	6-11	11-13
	Oatmeal		✓	✓	✓
	Charcoal		✓	✓	✓
	Black		✓	✓	✓



Calf Length

90% Cotton,
9% Nylon,
1% LYCRA®



DIABETIC
FRIENDLY



MADE IN
BRITAIN



Cotton Comfort

If you have diabetes, vascular disorders or circulatory problems, it's important to wear the right sock. This one is specially formulated to protect vulnerable feet against irritation, chafing or pressure which can cause sores and ulcers. Soft and exceptionally comfy, it's made from the finest combed cotton to keep feet dry and prevent skin infections.

	COLOUR		SIZE			
			S	M	L	XL
	Grey		4-7	6½-8½	9-11	11-13
	Black		✓	✓	✓	✓
	Oatmeal		✓	✓	✓	✓

2 PAIR PACK SINGLE COLOUR

Standard to **roomy** Fit

Code DCS **£21.50**

THE ROOMIEST SOCKS IN OUR RANGE

Fuller Fitting Socks



These amazing, ultra-roomy socks are super-stretchy, fitting very large, swollen or bandaged legs with ease. Soft and exceptionally comfy, the ribbed design holds them up securely without digging in, causing pressure or restricting circulation. They also have a smooth join at the toe which won't rub tender toes or skin. Our new Wool-rich version features a high content of Merino wool, which is both soft and lightweight. With natural climate control, they ensure your feet remain at a comfortable temperature, whatever the weather.

Thermal option available
Ask for details

> Maximum circumference 80cm



bestseller

Fuller Fitting Socks

	COLOUR	SIZE		
		S	M	L
		4-7	6½-8½	9-11
	Oatmeal	✓	✓	✓
	Black	✓	✓	✓

Knee Length & Calf Length 87% Cotton, 11% Nylon, 2% LYCRA®

New Wool-rich Fuller Fitting Socks

	COLOUR	SIZE		
		S	M	L
		4-7	6½-8½	9-11
	Oatmeal	✓	✓	✓
	Black	✓	✓	✓

Knee Length 87% Fine Merino wool, 11% Nylon, 2% LYCRA®

1 PAIR PACK SINGLE COLOUR

Knee Length *extraextraroomy*

Code FFS **£22**

Calf Length *extraextraroomy*

Code FFM **£19.50**

1 PAIR PACK SINGLE COLOUR

Knee Length *extraextraroomy*

Code FFW **£22**



Calf Length
70% Acrylic,
30% Nylon



MADE IN
BRITAIN



bestseller

2 PAIR PACK SINGLE COLOUR

Standard Fit **Code BS £17.50**

extraroomy Code EB £18.50

Super-soft Bed Socks

Enjoy a comfy and cosy night's sleep. Ideal for anyone with poor circulation, these snugly socks keep the coldest feet warm. The brushed yarn is luxuriously soft while the loose top around the ankle offers extra comfort. Our extra roomy option is a great fit for swollen feet and legs.

	COLOUR	SIZE		
		S	M	L
		4-7	8-11	11-13
	Silver	✓	✓	—
	Blush	✓	✓	—
	Ivory	✓	✓	—
	Charcoal	—	✓	✓
	Marine	—	✓	✓

Ankle Length
91% Cotton,
7% Nylon,
2% Elastane



MADE IN
BRITAIN

bestseller



Gripped Socks

Our super-comfy gripped socks are perfect for padding around the house or snuggling on the sofa. With slip-resistant tread and a sumptuously-soft terrycloth lining these socks are perfect for keeping feet cosy and warm. There's nothing to rub or irritate, thanks to the smooth join at the toe, and the loose top around the ankle offers extra comfort.

	COLOUR	SIZE		
		S	M	L
		4-7	6½-8½	9-11
	Berry	✓	✓	✓
	Bright Navy	✓	✓	✓
	Charcoal	✓	✓	✓

1 PAIR PACK SINGLE COLOUR

Standard to **roomy** Fit

Code GSS £14



MOST STYLES
AVAILABLE IN
**STANDARD &
extra roomy**
FITTINGS

ULTRA-COMFY HOSIERY FOR EVERY SHAPE & SIZE

Hosiery that doesn't cut off your circulation, won't sag or fall down and is long enough in the legs and roomy enough in the thighs and waist. Made exclusively for Cosyfeet, our hosiery is designed to fit you perfectly.



extra roomy FITTING

Our extra roomy hosiery is made on larger cylinders using more material so it's roomy throughout. This gives an exceptionally generous and comfortable fit and is ideal if you have swollen or shapelier legs.



Softhold[®] TOP

Traditional hosiery can sometimes feel tight or dig in. Our ultra-comfy Softhold[®] hosiery stays up gently but securely without pinching, cutting in or restricting your circulation.

ULTRA ROOMY

The roomiest hosiery in our range, designed for exceptionally swollen feet and legs. *See page 91.*

Petite FITTING

Designed for people under 160cm (5'3") in height. *See pages 94 & 95.*

XXXLARGE TIGHTS

Our Everyday Tights are available in XXXLarge which fits hips up to 229cm (90"). *See page 95.*



Fibre content
60% Cotton,
40% Polyamide

Seam-free Foot Socks

Our premium foot socks hide discreetly in your footwear to give you a barefoot look. Seam-free and super-soft, they're a pleasure to wear, especially if your feet are sensitive. They're also cotton-rich to keep feet cool. The patented 'comfort band' keeps them on securely without digging in for an exceptionally comfy fit. Our extra roomy version is perfect if you have swollen feet.

40 Denier

4 PAIR PACK OF ONE COLOUR



Natural

Standard Fit **Code STFSX** **£11**
(fits all shoe sizes)

extraroomy **Code XRFSX** **£12**
(fits all shoe sizes)



Fibre content
96% Nylon,
4% LYCRA®

Softhold® Premium Ankle Highs

When we say these are the comfiest ankle highs we've ever tried, we're not exaggerating! They don't dig in or restrict circulation thanks to our Softhold® top that holds them gently but firmly in place. Soft but hard-wearing, the added LYCRA® fibre ensures comfort, freedom of movement and a superb fit. And with 6 pairs in a pack, they're great value for money. Our extra roomy version is perfect for swollen feet and ankles.

15 Denier

6 PAIR PACK OF ONE COLOUR



Natural



Mink



Chiffon



Black

Standard Fit **Code NAS** **£12**
(fits all shoe sizes)

extraroomy **Code NAW** **£13**
(fits all shoe sizes)

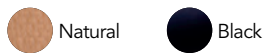
Softhold®

Ultra-roomy Ankle Highs

These ultra-roomy ankle highs are designed to fit very large or swollen legs and ankles so they're ideal if you have oedema (fluid retention) or lymphoedema. Made from a soft but hard-wearing high-quality knit, they're exceptionally comfy and very stretchy so you'll find them easier to put on. Thanks to our Softhold® top, that holds them gently but firmly in place, they won't dig in or restrict your circulation so all you feel is blissful comfort.

30 Denier

3 PAIR PACK OF ONE COLOUR



extraextraroomy Code URA **£13.50**

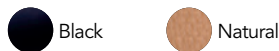


Fibre content
96% Nylon,
4% LYCRA®

Softhold® Ultra-roomy Knee Highs

These are the roomiest knee highs in our range. Designed to fit very large or swollen legs, they're ideal if you have oedema (fluid retention) or lymphoedema. Made from a soft, high-quality knit, they're exceptionally comfy and very stretchy so you'll find them easier to put on. A pleasure to wear all day, they won't sag or fall down thanks to the comfort band that holds them gently but firmly in place.

3 PAIR PACK OF ONE COLOUR



40 Denier **extraextraroomy**

Code URF **£15**

80 Denier **extraextraroomy**

Code URE **£15**



Fibre content
95% Nylon,
5% LYCRA®



Opaque Knee Highs

These premium-quality knee highs are a joy to wear. They feel wonderfully soft and smooth and have an elegant, silky sheen finish. The 3D technology by LYCRA®, renowned for its remarkable stretch, gives you greater freedom of movement along with enhanced comfort and fit.

Fibre content

Grey Marl

95% Nylon, 5% LYCRA®

Black, Navy & Burgundy

90% Nylon, 10% LYCRA®

80 Denier

3 PAIR PACK OF ONE COLOUR



Grey Marl



Navy



Black



Burgundy

Standard Fit **Code NOK £12**

extraroomy Code NXK **£13.50**



Softhold®

Light Support Knee Highs

Featuring LEG CARE technology by LYCRA® brand, which provides a gentle, graduated massage action that's clinically proven to improve circulation and reduce leg fatigue. The Softhold® top ensures they stay up comfortably without digging in.

Fibre content

90% Nylon,

10% LYCRA®

40 Denier

3 PAIR PACK OF ONE COLOUR



Natural



Mink



Chiffon



Black

Standard Fit **Code VE £12**

extraroomy Code NTK **£13**

extra roomy

Everyday Knee Highs

Ideal for swollen legs, these hard-wearing knee highs are roomier throughout giving you an exceptionally generous and comfy fit. The wide band provides extra comfort and won't cut into swollen legs.

bestseller

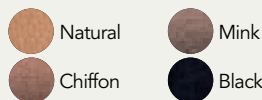


20 Denier

6 PAIR PACK OF ONE COLOUR

Fibre content

100% Nylon



extra roomy Code **NPP** **£11.50**



Softhold®

Premium Knee Highs

The Softhold® top holds them gently but firmly in place without digging in or restricting your circulation. Stretchy LYCRA® fibre gives you freedom of movement and an improved fit.

"Perfect fit and colour, would purchase again."

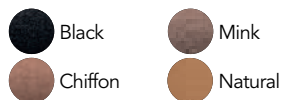
FEEFO REVIEW

20 Denier

3 PAIR PACK OF ONE COLOUR

Fibre content

96% Nylon,
4% LYCRA®



Standard Fit Code **NHP** **£11.50**

extra roomy Code **NHX** **£13**



Softhold® Premium Hold-ups

These premium-quality hold-ups are exceptionally comfy. Our unique Softhold® top keeps them gently but firmly in place without digging in or restricting circulation so all you feel is blissful comfort. They're sumptuously soft with stretchy LYCRA® fibre, that lets you move freely and enhances the comfort and fit. Our extra roomy version is perfect for swollen or shapelier legs.

20 Denier

2 PAIR PACK OF ONE COLOUR



Black



Mink



Chiffon



Natural

Standard Fit

Code **NHS** **£11.50**

extraroomy

Code **NHH** **£13**

30 Denier

2 PAIR PACK OF ONE COLOUR



Natural



Mink



Chiffon

Standard Fit

Code **NHU** **£11.50**

extraroomy

Code **NST** **£13**



30 Denier *Petite*

Ideal for those 160cm (5'3") or under in height

2 PAIR PACK OF ONE COLOUR



Natural



Chiffon

Standard Fit

Code **NPH** **£11.50**

extraroomy

Code **NPS** **£13.50**

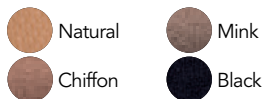
extra roomy Everyday Tights

Made on a larger cylinder than standard hosiery, these run-resistant tights are roomier throughout. This means they're long enough in the leg and big enough around the thighs and waist, providing an exceptionally generous and comfy fit.

bestseller

20 Denier

3 PAIR PACK OF ONE COLOUR



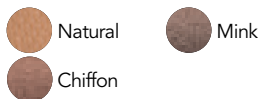
extra roomy Code NRR **£14**

Available in S*, M, L, XL, XXL – see size chart below *Size Small only available in Natural

NRR ALSO AVAILABLE IN XXXLARGE which fits hips up to 229cm (90") in Natural & Black only

20 Denier Petite

3 PAIR PACK OF ONE COLOUR



extra roomy Code NPR **£13**

Ideal for those 160cm (5'3") or under in height.

Fibre content
100% Nylon

Softhold® Warm Ribbed Tights

Knitted from SUPPLEX®, a clever fibre that keeps legs warm but still lets skin breathe. Stretchy throughout for a beautiful fit, the deeper-than-average waistband provides extra comfort.



Fibre content
60% SUPPLEX®,
35% Nylon,
5% LYCRA®

80 Denier

2 PAIR PACK OF ONE COLOUR



Standard Fit Code KT **£23**

extra roomy Code KX **£24.50**

Available in S*, M, L, XL, XXL* – see size chart below

*Size S & XXL only available in Natural and Black

TIGHTS SIZE CHART

If you have **swollen legs** we recommend our **extra roomy** fitting. Otherwise choose our standard fitting. You will also need to choose your size according to your hip or dress size.

PLEASE NOTE: Large and XLarge have a **half back panel gusset**. XXL and XXXL have a **full back panel gusset** which allows more room and enhances the comfort and fit. Our Everyday Tights are available in XXXL – see above for details.

	HIP SIZE	DRESS SIZE
SMALL	107cm (42")	Up to size 16
MEDIUM	122cm (48")	18 – 20
LARGE	142cm (56")	22 – 26
XLARGE	163cm (64")	28 – 32
XXLARGE	183cm (72")	32+

BRILLIANT BOOTS

PG 6 – 12



STAY WARM & COSY

PG 40 – 52



See our
Socks &
Hosiery
pg 80 - 95



Your local stockist is:



YOUR STOCKIST MAY NOT KEEP ALL THE ITEMS YOU CAN SEE IN THIS CATALOGUE. PLEASE CONTACT THEM TO CHECK THEY HAVE WHAT YOU WANT.